



National Guard

Always Ready



Presented by:
SFC David Whaley



AGENDA

Always Ready

- Criteria for use of National Guard assets
- Mobilization Procedures
- MNNG and HSEM
- Regional Representatives
- Typical Missions
- Capabilities / Limitations
- Special Units: JOC, NGRF, CST & CERFP
- Equipment (JOC, JCP & RCP)





CRITERIA

Always Ready

- National Guard Assistance may be provided when:
- The situation is beyond the capacity of tribal, local and state government to control and all civil resources have been exhausted.
- Required resources are not available from commercial sources.
- When public service is lost or withdrawn and an immediate substantial threat to public health, safety or welfare is evident.
- Assistance is limited to tasks that the National Guard can perform more efficiently and effectively than any other agency.

(UNCLASSIFIED//FOUO)



MOBILIZATION PROCEDURES

Always Ready

- **State Active Duty Mobilization Procedures**
- County Sheriff, Mayor of a city of the first class, requests National Guard Assistance from the Minnesota Duty Officer who contacts the Division of Homeland Security and Emergency Management (HSEM) to process the request.
- Division of Homeland Security and Emergency Management (HSEM) coordinates with the National Guard and the Governor on all requests.
- Governor approves/disapproves request for National Guard support.
- National Guard contacts local Sheriff/Police Chief/tribal leader to coordinate mission requirements.



NATIONAL GUARD / HSEM

Always Ready

- **National Guard / Division of Homeland Security and Emergency Management (HSEM) Relationship:**
- All approved missions are coordinated through HSEM.
- Division of Homeland Security and Emergency Management is not part of the Department of Military Affairs/National Guard.
- National Guard and HSEM are in close coordination during all aspects of the response.
- In addition, the National Guard provides logistical planning & staffing to the State Emergency Operations Center upon activation.
- The National Guard and HSEM are partners in emergency management.

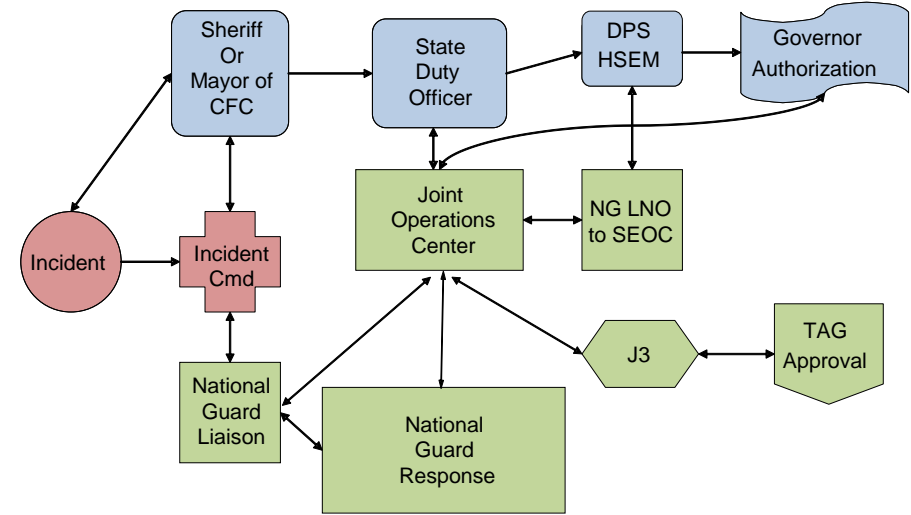
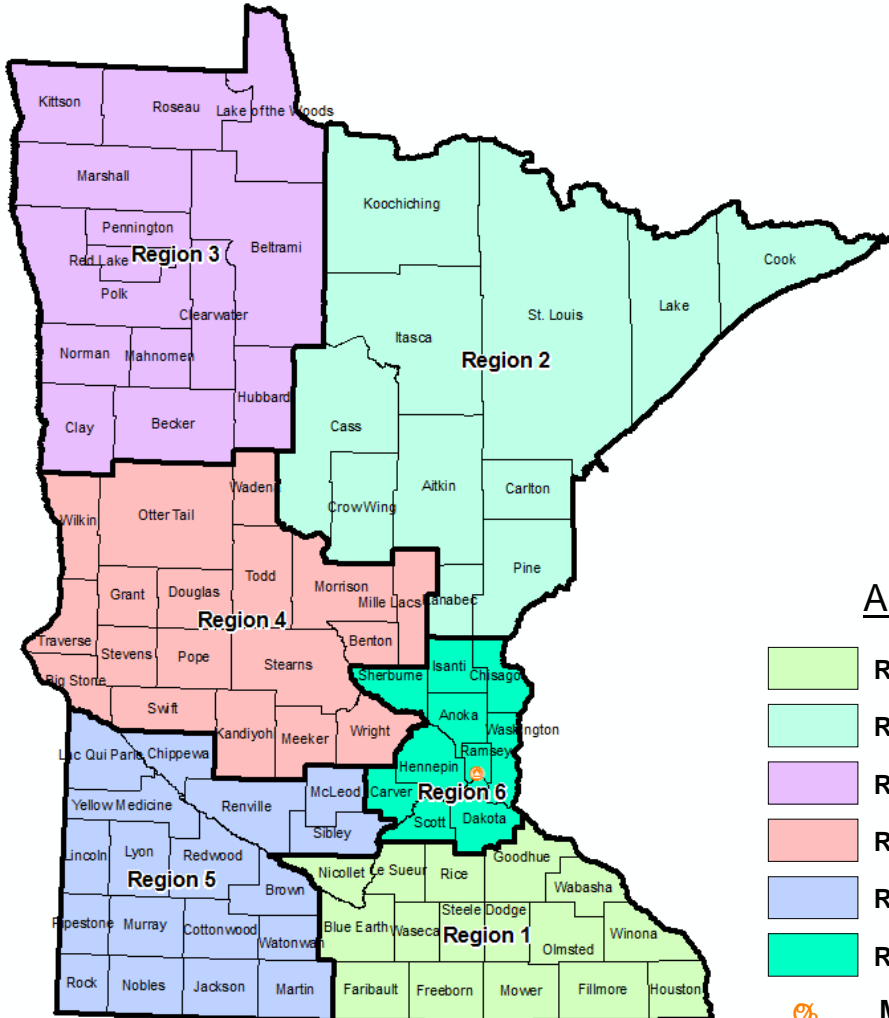
(UNCLASSIFIED//FOUO)



MN HSEM REGIONAL RESPONSE

Always Ready

Military Support to Civil Authorities – Standard Request



ASSIGNED UNIT

- Region 1 – 2-135 INF; Mankato
- Region 2 - 1-94th CAV; Duluth
- Region 3 - 2-136th CAB; Moorhead
- Region 4 - 1-194th CAB; Brainerd
- Region 5 - 1-125th FA; New Ulm
- Region 6 - 34th CAB/834th ASB; St. Paul
- MN HSEM / SEOC- J33 Interagency; St. Paul

(UNCLASSIFIED//FOUO)



TYPICAL MISSIONS

Always Ready

- **Typical State Active Duty Missions**
- Security
- Traffic Control
- Evacuation
- Search and Rescue
- Civil Disturbance Control
- Fire Protection / Fighting
- Natural Disaster Relief
- Emergency Debris Clearance





CAPABILITIES / LIMITATIONS

Always Ready

- **Some Important Considerations:**
- The National Guard is not a first responder.
- Local authorities remain in charge of the incident.
- MN Guard soldiers remain under the charge of their military chain of command.
- **Mission closure occurs when the protection of life and property, and preservation of peace, order, and public safety is restored.**



JFHQ – Joint Operations Center (JOC)

Always Ready

The Joint Forces Headquarters Minnesota (JFHQ-MN) Joint Operations Center (JOC) is located in the Cedar Street Armory, in close proximity to the State Capitol, Veterans Service Building and Homeland Security and Emergency Management (HSEM) offices.



(UNCLASSIFIED//FOUO)



Purpose

Always Ready

Purpose: The Joint Operation Center (JOC) provides the Minnesota National Guard Senior Leaders and Staff with a platform to Command and Control Soldiers performing State Active Duty missions in support of Local, State and Federal officials during contingency operations. Run 24/7, 365 Operations.

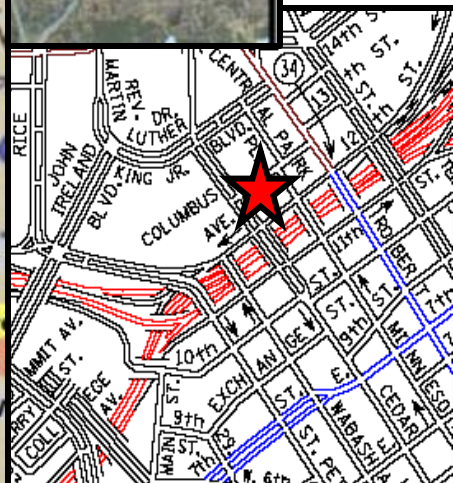


(UNCLASSIFIED//FOUO)



Capabilities – Mapping

Detailed maps of specific Areas of Operation & Areas *Always Ready* of Interest can be produced with CPOF and GIS mapping tools





SPECIAL UNITS

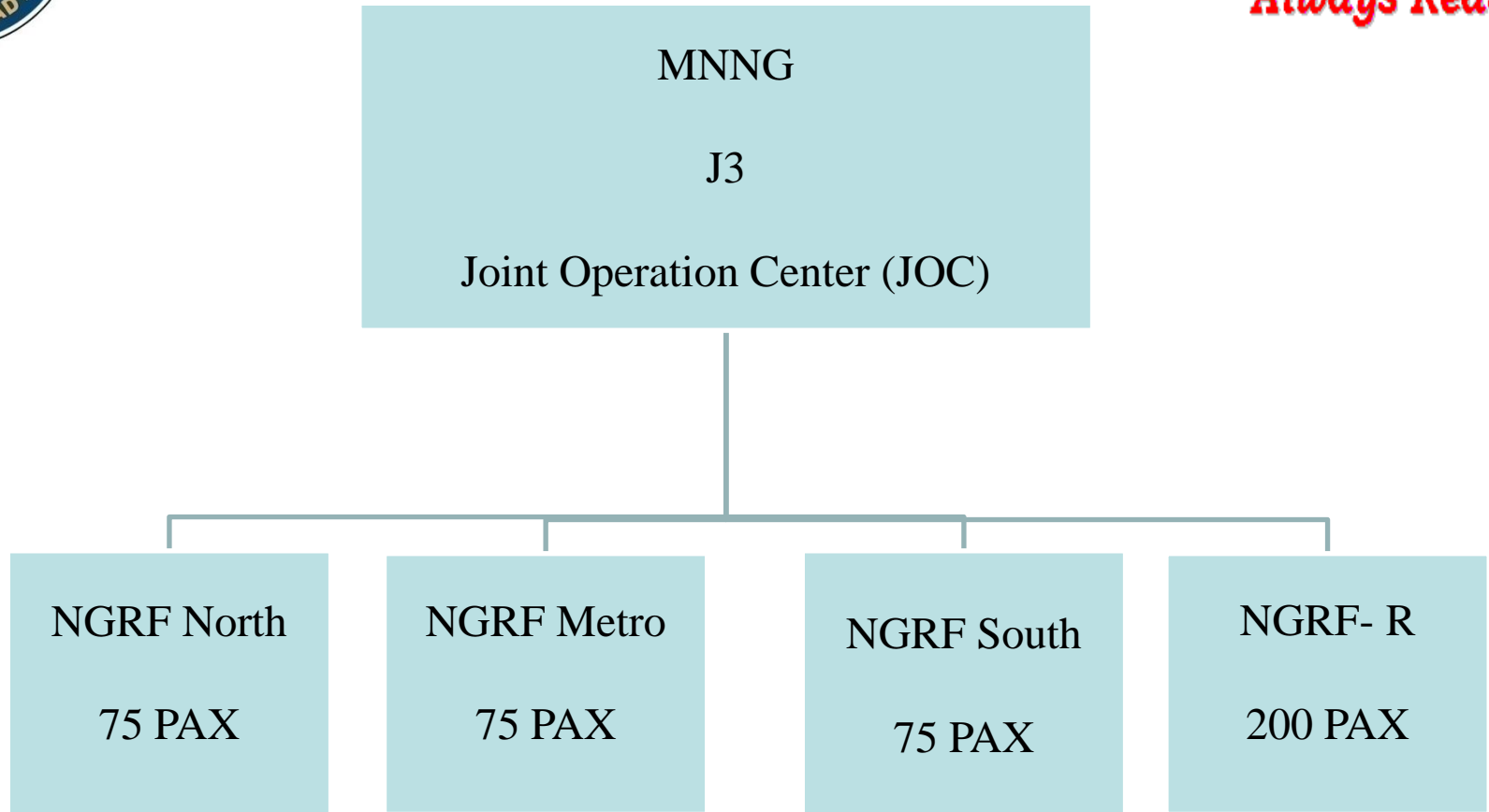
Always Ready

- **Emergency Response:**
- Local Unit-Initial response 72hrs+
- National Guard Reaction Forces (NGRF) 12hrs
- National Guard Reaction Force- Reserve (NGRF-R) 72hrs+
- 55th Civil Support Team (CST)
- Chemical, Biological, Radiological, Nuclear, Explosive, Enhanced Response Force Package (CERFP)



MN NG QRF/RRF ORGANIZATION CHART

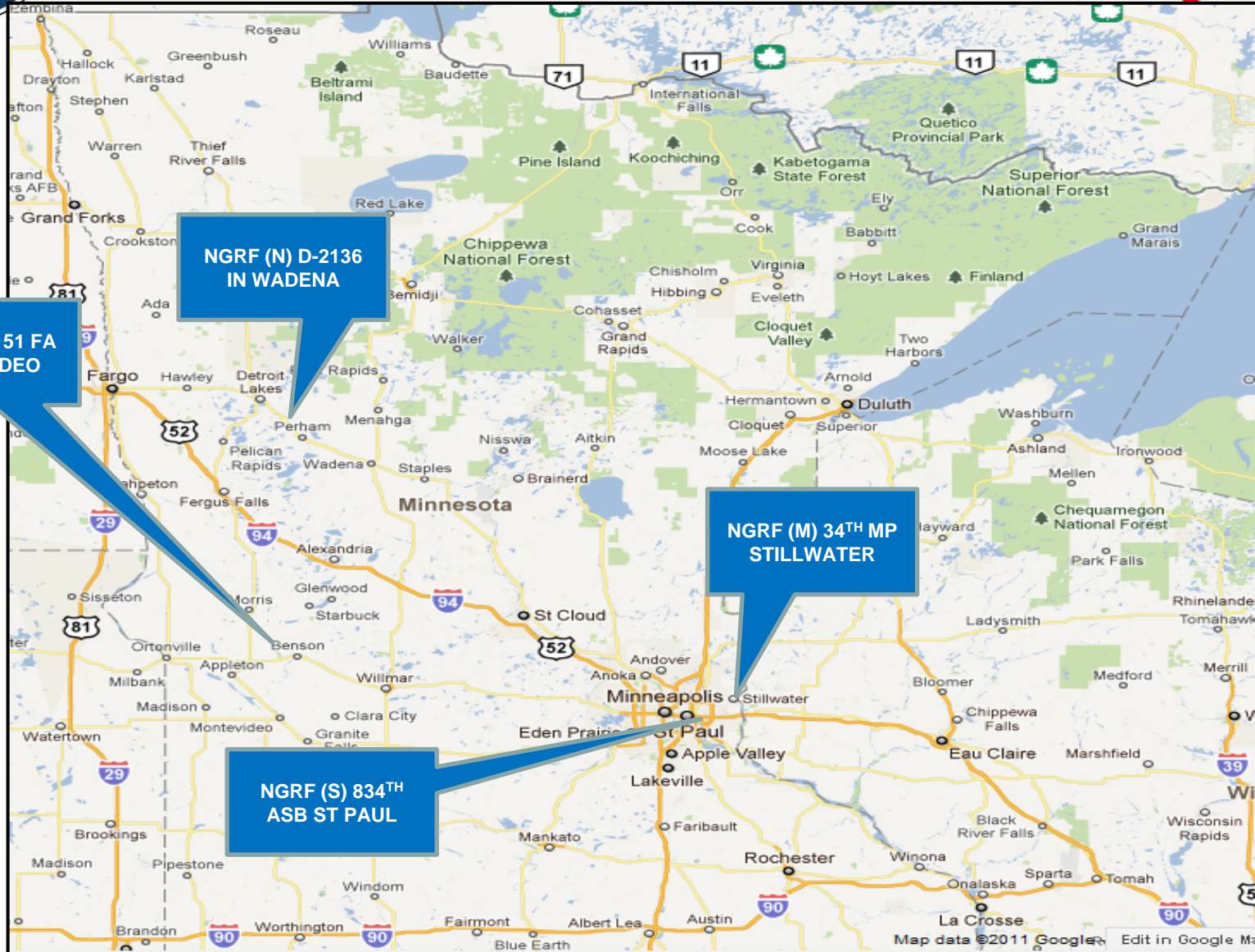
Always Ready





CURRENT NGRF UNITS AND LOCATIONS

Always Ready



**NGRF-R 1-151 FA
MONTEVIDEO**

**NGRF (N) D-2136
IN WADENA**

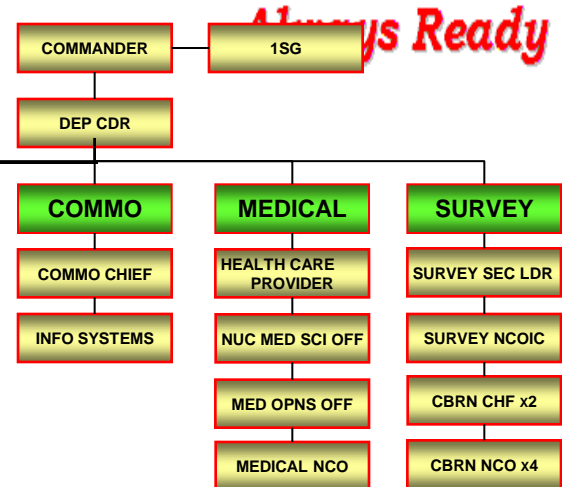
**NGRF (M) 34TH MP
STILLWATER**

**NGRF (S) 834TH
ASB ST PAUL**



WMD-CST OVERVIEW

22 Personnel



MISSION: Support civil authorities at a domestic CBRNE incident site by identifying CBRNE agents and substances, assessing current and projected consequences, advising on response measures, and assisting with appropriate requests for additional support.

NDA FY07 expanded the mission set to include immediate responses to intentional or unintentional releases of Toxic Industrial Chemicals (TICs) and Materials (TIMs), and natural or man-made disasters in the United States that result, or could result, in catastrophic loss of life or property.

WMD-CST KEY CHARACTERISTICS:

- Established in LAW (10 USC 12310)
- 57 WMD-CSTs certified by the SECDEF to Congress
- Operate only in US and Territories
- 22 Full-time, T32 AGR Personnel, Jointly manned w/ ARNG and ANG personnel
- 80% Non-standard equipment (COTS)
- Sophisticated Reach back System
- Interoperable with First Responders
- All WMD-CST personnel are HAZMAT TECH certified



Unified Communications Suite (UCS)

- Radios:
 - UHF/VHF
 - SATCOM
 - INMARSAT
- Phones:
 - DSN
 - Commercial
- Data:
 - NIPRNET
 - SIPRNET
- Video

Analytical Laboratory System (ALS)

- Refrigerator
- Glove Box
- GC/MS
- Immunoassay Tickets
- Gamma Spectrometer
- Fluorescent Microscope
- PCR
- FTIR
- Digital transmission link to UCS

(UNCLASSIFIED//FOUO)



CERF-P OVERVIEW

Always Ready

Mission

To assist the Incident Commander by deploying approximately 250 highly trained soldiers and airmen within 6 hours of notification to a natural or man-made disaster site.

The MN CERF is a modular force and can deploy any element by itself.



MN CERF FOUR ELEMENTS

Command and Control Team

- Directs/deploys the overall activity of the CERF
- Reports to the Incident Commander
- Maintains military chain of command

Search and Extraction Team

- Trained in Confined Space Entry (29 CFR 1910.146)
- Structural Collapse Training in accordance with (NFPA) 1006 Standard for rescue technician professional qualifications
- Training equivalent to US&R Type 2 Search and Rescue Team
- Extracts victims to include remains

Decontamination Team

- Monitor and detect CBRN hazards
- An all-hazards capability to DECON ambulatory and non-ambulatory casualties
- Decontamination of CBRN casualties, local responders, and military personnel using state-of-the-art military and commercial equipment
- Maintain accountability of personnel
- Self-sustaining, except for water source (hydrant, fire engine)
- Perform all operations in a Level C suit with PAPR
- Training equivalent to US&R Type 4 Search and Rescue Team

Medical Team

- Performs medical triage and initial treatment
- Provides emergency medical treatment and initial stabilization
- Stages for military and civilian transport
- Provides medical support to military, civilians, and first responders
- Medics are trained EMTs
- Doctors, PAs, and nurses are required to complete a biannual recertification in Pediatric Advanced Cardiac Life Support

(UNCLASSIFIED//FOUO)



EQUIPMENT

Always Ready

- Blackhawk Helicopter
- Chinook Helicopter
- Trucks (Various Capabilities)
- Fork lifts (Various Sizes)
- Pump (Various Sizes)
- Generator (Various Sizes)
- Light Sets
- Communication Trailers (Various Capabilities)





COMMUNICATION EQUIPMENT(JOC)

Always Ready

Voice Over Internet Protocol Phones

IP Communicator (softphones on computers)

Secure Terminal Equipment Phone (non secure / secure phone)

Iridium Satellite Cell Phone (non secure / secure modes)

Global System Mobile Cell Phone (non secure / secure modes)

High Frequency Radio (tactical radio technology)

Very High Frequency Radio

800MHz – Base Station / Cash Portable Radios

Multi-band scanner

ACU 1000 (gateway device)



Data

Non-classified Internet Protocol Router Network (MS Outlook)

Secret Internet Protocol Router Network (MS Outlook)

High Frequency (MS Outlook email)

Blue Force Tracker (texting)

Secure Faxing (work with secure terminal equipment phone)



(UNCLASSIFIED//FOUO)



Joint Communications Platform

5 Main Features

- Radio Interoperability (Civilian and Military)
- Telephone Capability (VoIP)
- Video Teleconferencing
- Internet (Wired and Wireless)
- Power Distribution & Lighting



Always Ready



JCP 1



JCP 2



JCP 3

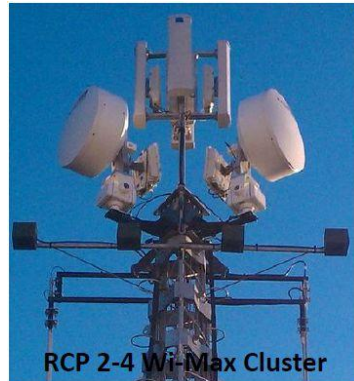
(UNCLASSIFIED//FOUO)



Remote Communications Platform

4 Main Features

- Civilian Radio Repeaters
- Military Radio Retransmission
- Wireless Internet Extension
- Power Distribution



RCP 2-4 Wi-Max Cluster



Remote Wi-Fi access point



(UNCLASSIFIED//FOUO)



RECOMMENDATIONS

Always Ready

- Have them request “tasks” to be supported, not specific equipment
- Have them define how long support is needed
- We will check in every day with supported County Emergency Managers
- Request NG extensions or additional NG equipment thru NG State Liaisons to reduce multiple resource requests
- Educate your local officials on the process
- You’re the forward representatives of the MN NG
- When in doubt contact the JOC



NG STATE LIAISONS

Always Ready

- **SCOTT ROHWEDER, MAJOR**
 - BLACKBERRY: 651-233-6942
 - OFFICE: 651-268-8860 or 8861

- **DAVID WHALEY, SERGEANT FIRST CLASS**
 - CELL: 651-324-8547
 - OFFICE: 651-268-8860 or 8861

 - **Department of Military Affairs Desk:** 651-223-9960
When the SEOC is activated.

 - **ADDRESS:** Joint Operations Center
600 CEDAR STREET
ST. PAUL, MN 55101

(UNCLASSIFIED//FOUO)



FLOOD SUPPORT

Always Ready



(UNCLASSIFIED//FOUO)