

# Local Emergency Response in Pennsylvania

Jerry Ozog, MPA  
Director Fire / EMS Training  
HACC Public Safety Center



# First Responder

- ▶ Local and non-governmental (PD, Fire, EMS)
- ▶ Early stages of incident (0 – 48 hours)
- ▶ Goals
  - Life Safety, incident stabilization, property conservation
- ▶ Emergency management, public health, public works, other skilled support services

# Local Response

- ▶ City, Township, Borough
- ▶ Fire Department
  - 96.1% Volunteer in PA (2,354)
- ▶ Police Departments
  - 1,088 – Part of local government
- ▶ Emergency Medical Services (Ambulance)
  - 1,100 – majority non-profit

# Example of Local Response



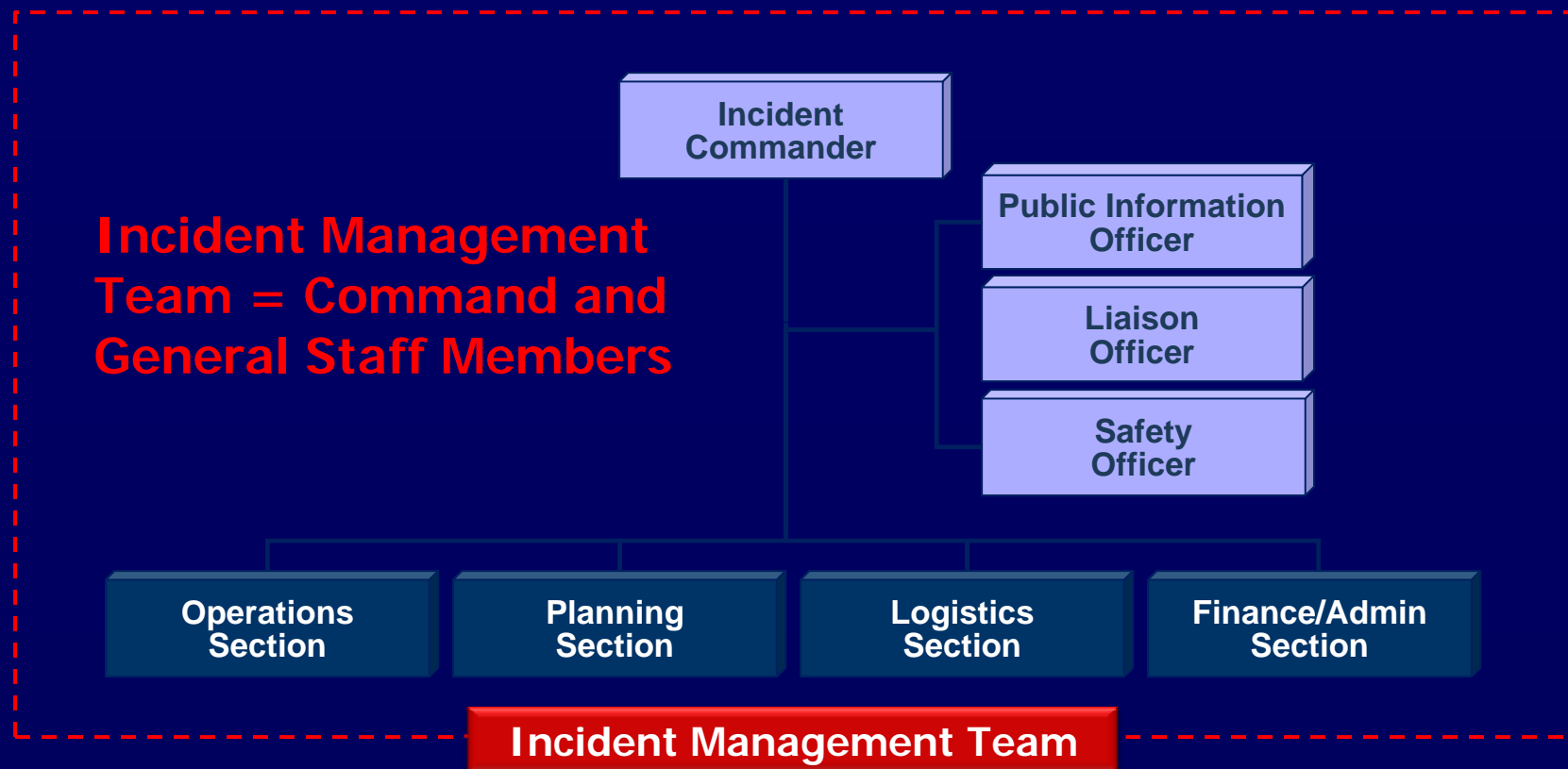
# What is a critical incident?

- ▶ Acts of terrorism
- ▶ Fires
- ▶ Hazardous Materials Incident
- ▶ Search and rescue
- ▶ Transportation accident
- ▶ Human Caused or natural disasters

# Initial Actions

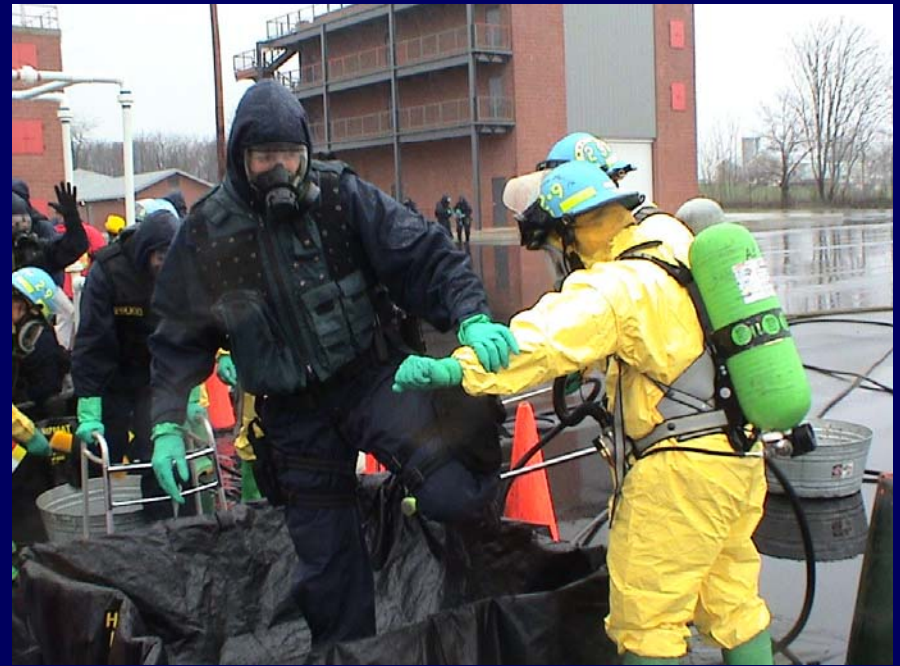
- ▶ Assessment and Size Up
- ▶ Establish command post
- ▶ Begin Search and Rescue
- ▶ Request Resources
- ▶ Care and Treatment of Victims

# Incident Command System



# County Response / Coordination

- ▶ Limited response capabilities in PA – 67 Counties
- ▶ Resources needed exceed local capabilities
- ▶ County Emergency Operations Plan





# EMA Roles / Responsibilities

- ▶ Initial local response and recovery
- ▶ Coordination of Resources
  - Title 35
  - Emergency Operations Plans
- ▶ County level coordination
- ▶ Develop a common operating picture

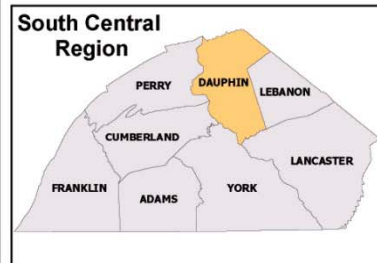
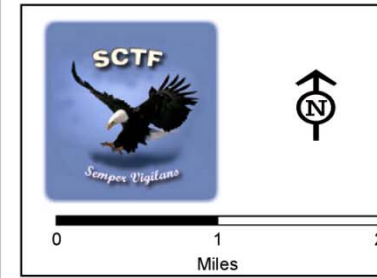
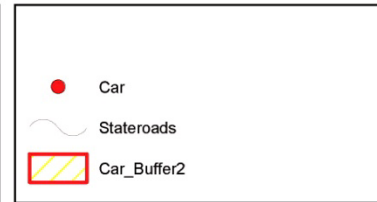
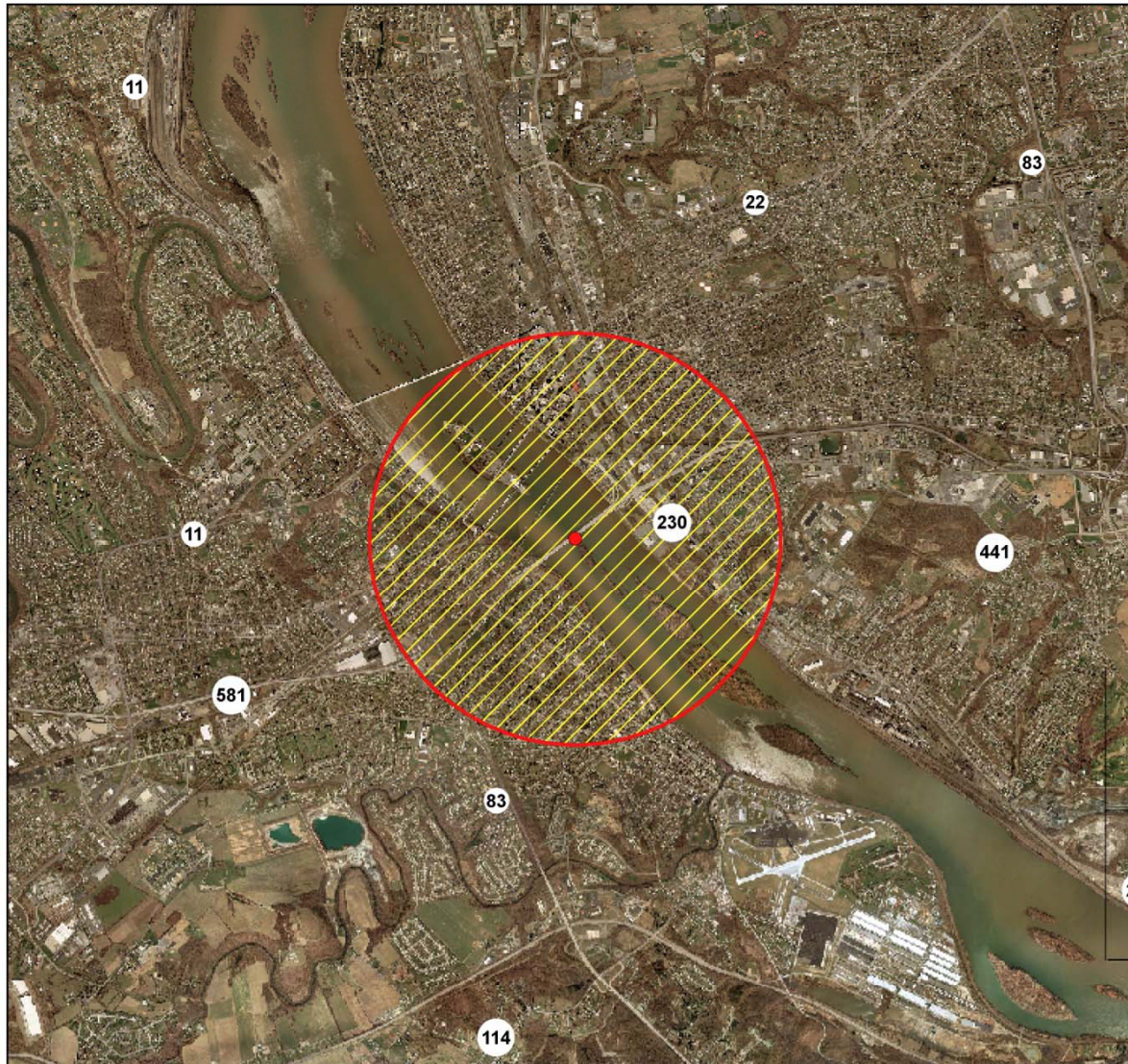
# Regional Response

- ▶ Most based on the Regional Task Forces
- ▶ Formed in the mid 90's to coordinate counter-terrorism activities
- ▶ Have evolved into all hazard planning groups.
- ▶ Incident Management Teams

# Federal and State Response

- ▶ Multiple Jurisdictions
- ▶ Multiple Counties
- ▶ Multiple States
- ▶ National Response Framework

# Dauphin County - Bridge Blast



Data provided by members of the South Central Pennsylvania Counter Terrorism Task Force, Pennsylvania Department of Transportation and ESRI.