

LMS Five Year Update

The public comment period has officially closed. Though people are welcome to submit comments at any time, for the purposes of the five year update, I will be incorporating comments that were received by the end of October. If you have something else to send me please do so as soon as possible, as I am doing my final review and update of all sections of the LMS now. Thank you to those who have contributed to the update.

If you have projects on the list you should be finalizing those updates as well. I will be pulling the list from WebEOC on **November 20th**.

CRS Updates and Updated LMS Plan

A number of the CRS communities have asked about the timing of the 2015 LMS Plan adoption. The 2009 plan is currently the approved plan until May 5, 2015. As soon as we have State and FEMA approval of the new version, we will then submit it for Board of County Commission adoption and also make it available to your communities for local adoption. If you need maps or other portions of the updated plan to integrate into your submittals for CRS, please let me know and I will be happy to share with you all of the materials. I am working with Marcia Steelman to help identify items we have added into the plan for potential CRS credit.

I recently had the pleasure of reviewing the annual update for the City of North Miami. I am happy to review your annual updates. It helps me learn more about your community and activities and I may be able to identify areas where we have additional information for you to add to your plan.

New Maps Available

Thanks to the support and hard work by Soheila Ajabshir from ITD, we have more new maps for our LMS plans. We have pulled data from the property appraiser database to calculate the number of buildings by four types within each jurisdiction. We also have a composite map for where Sea Level Rise may impact us. We have also created maps and charts that show the building breakdown by storm surge planning zone as well. All of these will be incorporated into the five year update of the plan. If you would like a copy of these please let me know and I will get them to you.

LMS Calendar

Next LMS Quarterly Meeting:

Date: December 10, 2014

Time: 9:30-11:30 am

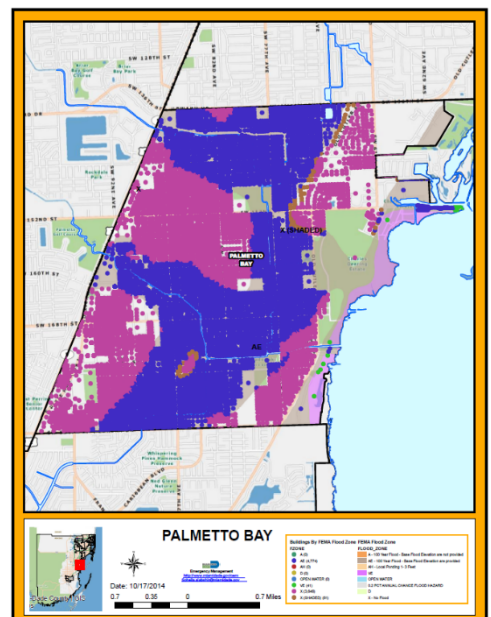
Location: Pinecrest Gardens (old Parrot Jungle location)
11000 SW 57 Ave
Pinecrest, FL 33156
Meet in the main entrance bldg. (old gift shop)

All Working Group Members and the public are welcome to attend.

Future Quarterly Meetings:

March 18, 2015

June 17, 2015



Funding Opportunities

The application period for the FY 2014 Assistance to Firefighters Grants is open from November 3rd – December 10th.

Guidance may be found at <https://www.fema.gov/welcome-assistance-firefighters-grant-program>

THIRA Updates

MDEM is currently updating our THIRA and I am working on this project so we can continue our integration and alignment with the LMS. There will be opportunities for input from our whole community partners and I will let you know when those meetings will be.

New Regional Website for Mitigation

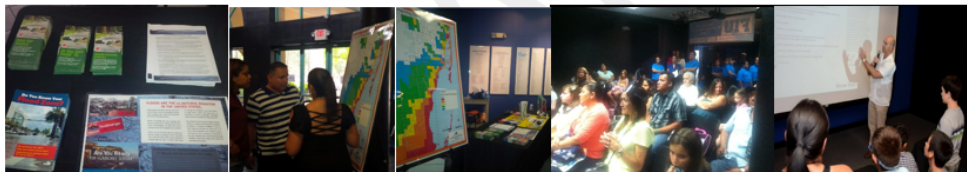
I am in the planning stages of adding a mitigation page to the Ready South Florida website, which provide links to Miami-Dade, Broward, Palm Beach and Monroe Counties. This will be an excellent forum for us to post mitigation information and also for us to provide more information about the CRS programs. If you are interested in working with me on this project, please let me know so I can include you in the process.

Public Outreach

For Part 7 of the LMS I am creating a log of the annual and regular outreach events that occur for all types of hazards. If you have something you would like to add to the list for inclusion in the plan please send me information on your event and the materials that you provide. See the Sample below.

Public Safety Expo	Annual	Hurricane Nuclear Power Plant	Open to the Public @5000	Miami-Dade Hurricane Brochure Storm Surge Planning Zone
MDCPS Turkey Point information	Annual	Nuclear Power Plant	109,500 households	Turkey Point Brochure
AmeriCorps Volunteer Disaster Preparedness Orientation	Bi-Annually	Hurricane Preparedness Storm Surge Supply Kit Poison Control	20	Miami-Dade Hurricane Brochure Ready South Florida Brochures Poison Control MDFR Venomous Snakes brochure
Hotel Hurricane Preparedness	Annual (May)	Hurricane Preparedness	250	Miami-Dade Hurricane Brochure

2014 Feel the Force event



2014 Target Child Preparedness Day

2014 Severe Weather Awareness Week



Housing Resilience Forum

The University of Miami is hosting a Housing Resilience Forum on November 14th from 8:30 am -12:30 pm. I have been invited to speak about the efforts of the LMS and the work we all do to assess and address the risks and how mitigation benefits all of us. For more information and to RSVP email civicengagement@miami.edu.

Unified Federal Review Applicant Guidance Open for Comment

FEMA, in conjunction with its interagency Steering Group, announced the public review period for the Draft Environmental and Historic Preservation Guidance for Federal Disaster Recovery Assistance Applicants. The Draft Applicant Guidance is an important step in the implementation of the Unified Federal Environmental and Historic Preservation Review Process (Unified Federal Review). The Unified Federal Review was legislatively mandated in the Sandy Recovery Improvement Act. The law amends the Robert T. Stafford Disaster Relief and Emergency Assistance Act and authorizes several significant changes to the way agencies may deliver Federal disaster assistance and establishes efficiencies that will expedite the recovery process. Additional information on the Unified Federal Review is available online (<http://www.fema.gov/environmental-historic-preservation/unified-federal-environmental-and-historic-preservation-review>).

The Draft Applicant Guidance will assist in navigating through and understanding Environmental and Historic Preservation compliance requirements when multiple agencies may be involved in funding or permitting a disaster recovery project. The guidance provides overview of the process for applying for federal assistance and permits. It also outlines types of information Applicants should submit to federal agencies to assist in expediting the Environmental and Historic Preservation review.

The development of the Draft Applicant Guidance has been led by the Unified Federal Review Steering Group, comprised of the Department of Homeland Security, FEMA, the Advisory Council on Historic Preservation, and the Council on Environmental Quality in coordination with its federal interagency working group. The input provided during the public review will inform the further development of the guidance.

To access the Draft Applicant Guidance and for further instructions on submitting comments, please visit the Unified Federal Review webpage (<http://www.fema.gov/environmental-historic-preservation/draft-environmental-and-historic-preservation-guidance-federal>).

Comments can be submitted through November 28, 2014.

I wish you all a very Happy and Safe Thanksgiving and look forward to seeing you at our December 10th meeting.